

Yours to enjoy...

Alligator River National Wildlife Refuge encompasses a broad expanse (152,000 acres) of mysterious wildlands and waters. Visitors are welcome to explore this unique upland swamp refuge. The designated wildlife drive and trails offer the best wildlife viewing opportunities. Black bear, deer, river otters, and red wolves, along with a variety of birds, reptiles, and amphibians may be seen. During the winter months, large numbers of waterfowl and other migratory birds are present. Wildlife viewing is best from a safe distance. If you plan to venture into areas not designated as roads or trails on this map, please inform a responsible person of your plans. Be aware that poison ivy, ticks, insect pests, poisonous snakes (cotton-mouths, copperheads, and timber rattlers), and other natural nuisances and hazards may be encountered. This is your National Wildlife Refuge. Please enjoy your refuge experience, but handle with care.

Tips for Wildlife Viewing

- Wildlife are usually most active at dawn and dusk.
- Walk or drive slowly and quietly; stop frequently to watch and listen.
- Be friendly to other visitors; often they will share information!
- Bring binoculars or spotting scopes and field guides.
- Bring insect repellent and a non-alcoholic drink.

You Can Help

- by obeying regulations.
- by respecting the refuge, wildlife, and other visitors.
- by volunteering your time. Contact the Volunteer Coordinator at 252/473 1131 ext. 230.
- by joining the Coastal Wildlife Refuge Society
P. O. Box 1808
Manteo, NC 27954

100% of your membership fees and donations support refuge programs.

For More Information

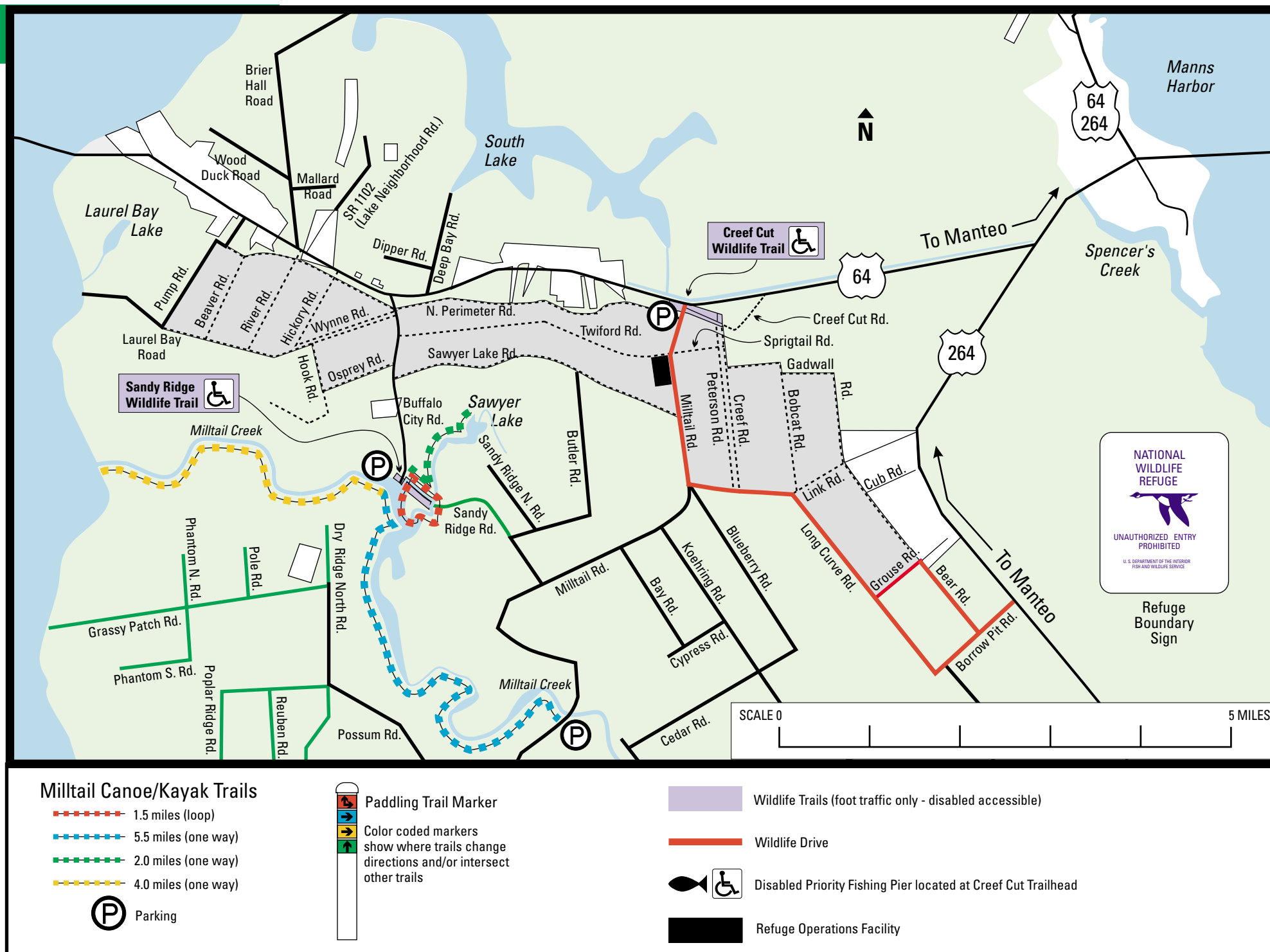
Alligator River National Wildlife Refuge
P. O. Box 1969
Manteo, NC 27954

phone: 252/473 1131
email: alligatorriver@fws.gov

<http://alligatorriver.fws.gov>
<http://www.outer-banks.com/alligator-river>

Audio tour tape or CD available for purchase.

In addition to these provisions, all State laws, County codes, and Title 50 of the Code of Federal Regulations apply on the Refuge. If you have any questions about the legality of any activity, please contact the Refuge Manager.



Regulations
General

- The Refuge is open during daylight hours only (from 1/2-hour before sunrise to 1/2-hour after sunset).
- Camping, open fires, feeding or baiting of wildlife, swimming in Refuge canals, or entering any area posted with "Area Closed" signs is prohibited.
- All domestic pets (dogs, cats, horses, etc.) must be properly confined, leashed (10-foot maximum), or haltered and under owner control at all times.
- Littering or dumping of garbage, refuse, sewage, debris, or other wastes or poisons is prohibited.
- The use of a spotlight, automotive headlight, or other artificial light to spot, observe, locate, or take any animal on the Refuge is prohibited.
- Taking, possessing, injuring, disturbing, damaging, destroying, or collecting any plant or animal (or attempting these actions) is prohibited.
- Destroying, defacing, damaging, disturbing, or removing any private or public property, including any natural object or artifact, is prohibited. The use or possession of metal detectors or similar devices is prohibited.
- Disturbing, molesting, or interfering with any person engaged in an authorized activity is prohibited. Engaging in any act of indecency or disorderly conduct (as defined by State or local laws) is prohibited.
- Entering or remaining on the Refuge when under the influence of alcohol or a controlled substance is prohibited.

- Begging or soliciting in any form or conducting a commercial enterprise on the Refuge is prohibited.
- Hunting/Fishing/Weapons**
- Carrying, possessing, or discharging firearms, fireworks, or explosives is prohibited. Firearms may be possessed, used, or transported only by persons engaged in public hunting or by persons carrying unloaded firearms that are either dismantled or cased.
 - Carrying, using, or possessing cross bows, bows and arrows, air guns, spears, gigs, or other weapons is prohibited. Some of these weapons may be legal to use for hunting or fishing (see current Refuge hunting permit and State regulations).
 - Hunting and fishing are subject to State and local regulations, seasons, and bag limits. A Refuge permit is required for hunting.

- Vehicles/Roads/Trails**
- The speed limit on all Refuge roads, unless otherwise posted, is 35 miles per hour. State traffic laws that govern the use and operation of vehicles apply on the Refuge.
 - Traveling outside of designated routes of travel is prohibited. Designated routes of travel are shown on the Refuge maps or as posted with "road closed," "no vehicle," or "foot traffic only" signs.
 - Operating any vehicle or boat that does not bear valid license plates or identification numbers and that is not properly lighted, certified, registered, or inspected according to State laws is prohibited. ATV's (3-wheelers, 4-wheelers, dirt bikes, etc.) are prohibited.
 - Stopping or parking a vehicle (either attended or unattended) on a road, trail, or firelane such that it blocks the free movement of other vehicles is prohibited.